

15.6.17

Dear Families and Whanau,

To celebrate Matariki-The Maori New Year, the whole school will be participating in a day of Maori games and activities in their school houses (Thursday the 22<sup>nd</sup> June).

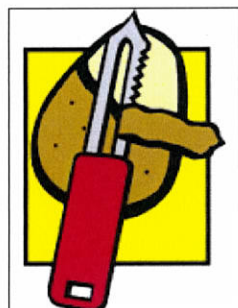
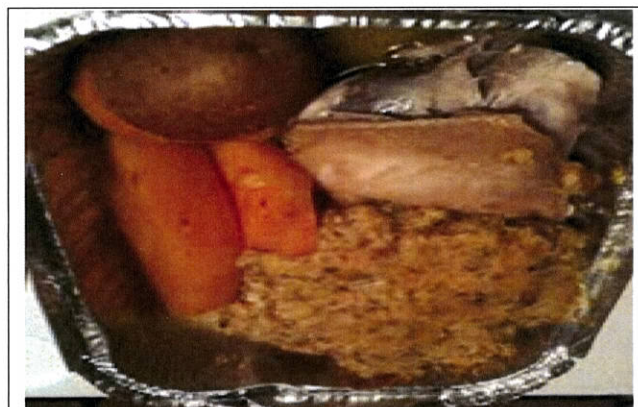
These activities will finish at lunch time where the children will all be able to partake in a hangi thanks to Murray Bain, Ash Tongaroa and Smart Environmental who are sponsoring this day. The day finishes with Te Whare Piwakawaka assembly in the hall at 2.15.

As part of the understanding of shared food and a sense of community the children will all be preparing the vegetables on the afternoon of Wednesday 21<sup>st</sup> June, could they all bring a labelled vegetable peeler and/or for the younger less abled children a table spoon (for scooping out pumpkin seeds).

Thanking you

Kirsty Bain

Teacher Te Whare Piwakawaka



He aha te kai a te rangatira?

He Korero, he korero, he Korero

What is the food of the leader? It is knowledge, it is communication